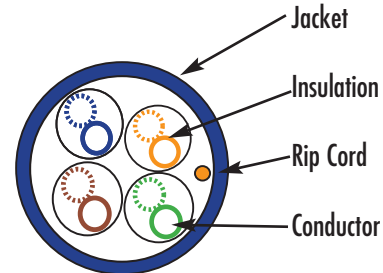


Digital Integration Category 5E Cable

Rev.2. 5/02

Description:

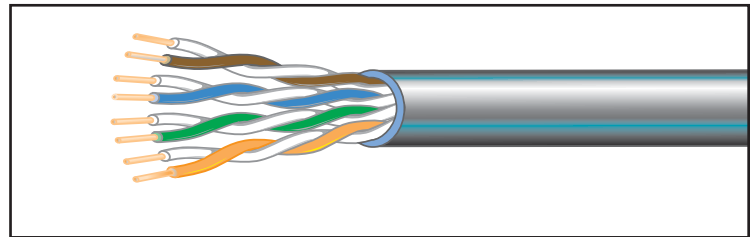
- Multiple pair Category 5E cable
- Enhanced UTP Category Cable
- 4 pair 24AWG unshielded
- Thermoplastic insulation
- Each pair twisted in varied lays
- Thermoplastic jacket



Applications:

High performance horizontal wiring that meets or exceeds industry standards for:

- Analog and Digital voice systems
- Intercom systems
- Security (CCTV) systems
- 10 Base-T, 100 Base-T, and 1000 Base-T
- FDDI TP-PMD
- 16Mbps Token Ring
- Home Networking
- ATM 155Mbps
- 550 Mhz Broadband video and standards under development such as: 622Mbps ATM



Rating:

- UL listed NEC type CMR or MPR as defined in NEC Article 800
- Constructed in accordance with UL Standard 444
- Complies with UL 1666 Vertical Tray Flame Test
- Meets and Exceeds TIA/EIA 568-B.2 Specifications
- Verified to Category 5E requirements by independent third party testing laboratory

Installation Characteristics:

Cable Weight:	22lbs/1000ft (33kg/km)
Bending Radius:	1" (25.4mm)Min (4x Cable O.D.)
Pulling Tension:	25lbf (110N)
Operating Temp:	-34°C to +60°C (-30°F to +140°F)
Storage Temp:	-34°C to +75°C (-30°F to +167°F)
Installation Temp:	-20°C to +60°C (-4°F to +140°F)

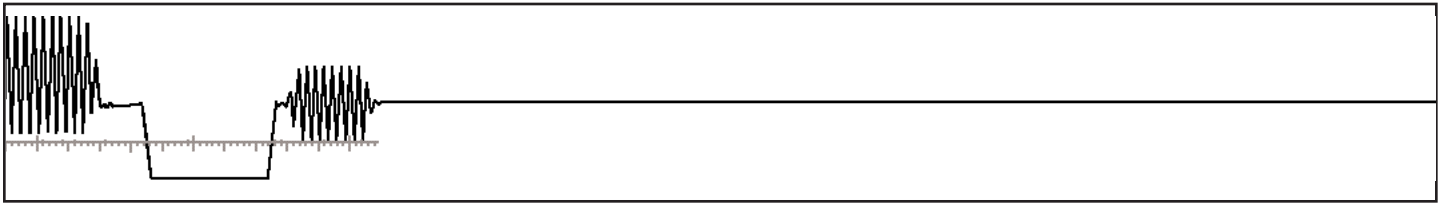
Color Code:

Pair No.	1st Conductor	2nd Conductor
1	White/Blue	Blue
2	White/Orange	Orange
3	White/Green	Green
4	White/Brown	Brown

Mechanical Characteristics

Number of Pairs	4
Awg. Size	24
Conductor Type	Solid Bare Copper
Insulation	Thermoplastic
Nom. Jacket Thickness	.020 in (.51mm)
Nom. O.D.	.194 in. (4.93mm)
Jacket Type Color	Gray, Blue, White

WEST PENN WIRE



Frequency Mhz	Attenuation			NEXT		ACR*	PS-NEXT		PS-ACR	ELFEXT	PS-ELFEXT	SRL (db)	RL (db)
	db/100m	db/100ft	min.	avg.	min.	min.	avg.	min.	min.	min.	min.		
.772	1.6	1.8	5.5	79	68.0	66.2	72	69.0	67.2	--	--	--	--
1.0	1.8	2.0	6.3	74	66.3	64.3	70	67.3	65.3	63.8	60.8	23.0	22.0
4.0	3.8	4.1	13	65	57.3	53.2	60	58.3	54.2	51.7	48.7	23.0	23.0
8.0	5.4	5.8	18	61	52.8	47.0	57	53.8	48.1	45.7	42.7	23.0	24.5
10.0	6.0	6.5	20	59	51.3	44.8	55	52.3	46.0	43.8	40.8	23.0	25.0
16.0	7.6	8.2	25	56	48.3	40.1	52	49.3	41.2	39.7	36.7	23.0	25.0
20.0	8.6	9.3	28	55	49.8	37.5	50	47.8	38.7	37.7	34.7	23.0	25.0
25.0	9.7	10.4	32	53	48.3	34.9	49	46.3	36.1	35.8	32.8	22.0	24.3
31.25	11.0	11.5	36	51	46.9	32.2	48	44.9	33.4	33.9	30.9	21.1	23.6
62.5	16.1	16.7	52	47	42.4	22.4	42	39.4	22.7	27.8	24.8	18.1	21.5
100.0	21.0	21.6	67	44	39.3	14.3	40	37.3	15.7	23.8	20.8	16.0	20.1
155.0	26.9	27.6	85	42	36.5	5.4	37	34.1	6.5	19.9	16.9	14.1	18.8
200.0	31.1	31.9	97	40	34.8	2.9	36	32.8	0.9	17.7	14.7	13.0	18.0
350.0	43.0	44.2	135	36	31.2	--	32	29.2	--	12.9	9.9	10.6	16.3

TIA/EIA 568-B.2 CABLE MINIMUM SPECIFICATION: 100Mhz

- Attenuation: 22dB
- NEXT: 35.3dB
- PS-NEXT: 32.3dB
- ELFEXT: 23.8dB
- PS-ELFEXT: 20.8dB
- Return Loss 20.1dB

